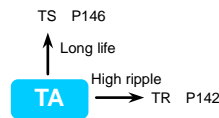




# TA SERIES

- High Voltage
- Standard
- RoHS

- All-welded construction ensures reliable electrical contact
- Working voltage below 750V
- Endurance with ripple current: 2000 hours at 85°C
- Applications: Frequency converters, Uninterruptible power supplies and Electric welding machine

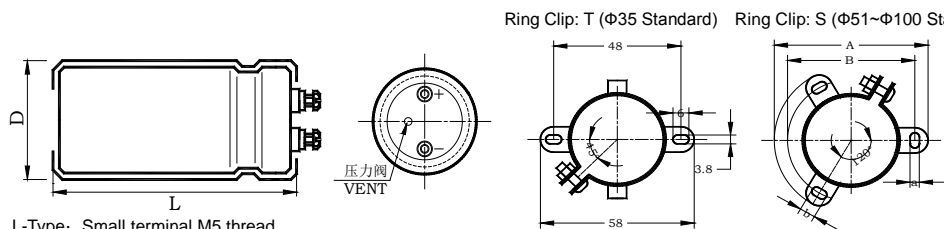


## SPECIFICATIONS

Items	Characteristics	
Operating Temperature Range	-40~+85°C	-25~+85°C
Rated Working Voltage Range	10~250V	350~750V
Capacitance Range	820~820000 μF	
Capacitance Tolerance	±20% (20°C, 120Hz)	
Dissipation Factor (MAX) 20°C, 120Hz	U <sub>R</sub> (V)	10-100   160   200   250   350   400   450   500   550   600   650   700   750
	tanδ	0.20   0.15   0.20   0.25   0.30
Leakage Current (MAX)	I = 0.01C <sub>R</sub> U <sub>R</sub> or 5mA whichever is minimum. (at 20°C, After 5 minutes application of rated voltage) I = Leakage Current (μA)      U <sub>R</sub> = Rated Voltage (V)      C <sub>R</sub> = Rated Capacitance (μF)	

	Useful Life		Load Life	Endurance Test	Shelf Life	
Life Time	4000h	>65000h	2000h	2000h	1000h U <sub>R</sub> ≤ 550V	500h U <sub>R</sub> ≥ 600V
Leakage Current	≤ Specified value		≤ Specified value	≤ Specified value	≤ Specified value	
tanδ Change	≤ 300% of specified value		≤ 175% of specified value	≤ 130% of specified value	≤ 150% of specified value	
Capacitance Change	Within ± 30% of initial value		Within ± 15% of initial value	Within ± 10% of initial value	Within ± 15% of initial value	
Condition	U <sub>R</sub> I <sub>R</sub> 85°C	U <sub>R</sub> 1.2 × I <sub>R</sub> 40°C	U <sub>R</sub> I <sub>R</sub> 85°C	U <sub>R</sub> I <sub>R</sub> =0 85°C	U <sub>R</sub> =0 I <sub>R</sub> =0 85°C	Back up to 20 °C and placed more than 24 hours. U <sub>R</sub> to be applied for 60 min before measurement.
Applied Voltage	≤ 1% Failure rate		0%	0%	0%	
Applied Ripple Current	≤ 1% Failure rate		0%	0%	0%	
Applied Temperature	≤ 1% Failure rate		0%	0%	0%	
Failure Rate Level	≤ 1% Failure rate		0%	0%	0%	

- Dimensions
- Terminal Code



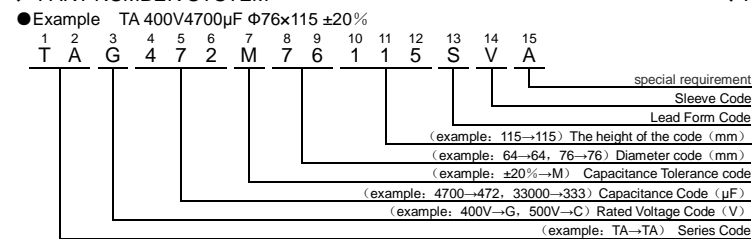
Ring Clip Dimensions:

ΦD	A	B	a	b
51	73.0	63.5	4.5	7
64	85.1	76.2	4.5	7
76	98.4	88.9	4.5	7
89	111.1	101.6	4.5	7
100	127.0	115.0	6.2	8

For detailed dimension & tolerance, please refer to P130

- Please consult to us for the terminal type not displayed in content.

## PART NUMBER SYSTEM



## Rated Ripple Current Multiplies

### Frequency coefficient

(v) Rated voltage	Frequency (Hz)				
	50 (60)	100 (120)	300	1k	≥10k
10~50WV	0.95	1.00	1.04	1.10	1.15
63~100WV	0.95	1.00	1.06	1.16	1.30
160~500WV	0.80	1.00	1.10	1.25	1.50
550WV~750WV	0.80	1.00	1.10	1.30	1.40

### Temperature coefficient

(v) Rated voltage	Temperature (°C)			
	+40	+60	+70	+85
10~50WV	2.70	2.00	1.70	1.00
550~750WV	1.89	1.67	—	1.00



TA SERIES

◆ Standard Ratings

WV <sub>DC</sub> (Surge Voltage) (V)	Cap (μF)	Size D×L (mm)	tanδ 20°C/120Hz	Ripple Current 85°C/120Hz (Arms)	Catalog Part Number
10 (13)	33000	35×60	0.80	5.1	TAW333M35060□VA
	39000	35×60	0.80	5.6	TAW393M35060□VA
	47000	35×60	0.80	6.2	TAW473M35060□VA
	56000	35×80	0.80	7.3	TAW563M35080□VA
	68000	35×80	0.80	8.0	TAW683M35080□VA
	82000	35×100	0.80	9.2	TAW823M35100□VA
	100000	35×100	0.80	10.5	TAW104M35100□VA
	120000	35×120	0.80	12.0	TAW124M35120□VA
	150000	35×120	1.00	12.9	TAW154M35120□VA
	180000	51×95	1.00	13.4	TAW184M51095□VA
	220000	51×115	1.50	14.4	TAW224M51115□VA
	270000	51×115	1.50	15.3	TAW274M51115□VA
	330000	64×95	1.50	18.3	TAW334M64095□VA
	390000	64×115	1.50	20.7	TAW394M64115□VA
	470000	64×130	2.00	20.2	TAW474M64130□VA
	560000	76×115	2.00	22.8	TAW564M76115□VA
680000	76×130	2.00	26.0	TAW684M76130□VA	
820000	76×155	2.00	29.5	TAW824M76155□VA	
16 (20)	22000	35×60	0.60	4.9	TAV223M35060□VA
	27000	35×60	0.60	5.4	TAV273M35060□VA
	33000	35×60	0.60	6.0	TAV333M35060□VA
	39000	35×60	0.60	7.1	TAV393M35060□VA
	47000	35×80	0.60	7.6	TAV473M35080□VA
	56000	35×80	0.60	8.7	TAV563M35080□VA
	68000	35×100	0.60	10.0	TAV683M35100□VA
	82000	35×100	0.80	9.9	TAV823M35100□VA
	100000	35×120	0.80	11.5	TAV104M35120□VA
	120000	35×120	0.80	13.0	TAV124M35120□VA
	150000	51×95	1.00	13.5	TAV154M51095□VA
	180000	51×115	1.00	14.0	TAV184M51115□VA
	220000	51×130	1.00	18.3	TAV224M51130□VA
	270000	64×95	1.00	19.3	TAV274M64095□VA
	330000	64×115	1.50	18.4	TAV334M64115□VA
	390000	64×130	1.50	21.9	TAV394M64130□VA
470000	76×115	1.50	25.5	TAV474M76115□VA	
560000	76×130	1.50	28.3	TAV564M76130□VA	
680000	76×155	1.50	33.1	TAV684M76155□VA	
820000	89×157	2.00	32.5	TAV824M89157□VA	
25 (32)	15000	35×60	0.50	4.4	TAU153M35060□VA
	18000	35×60	0.50	4.9	TAU183M35060□VA
	22000	35×60	0.50	5.4	TAU223M35060□VA
	27000	35×60	0.50	6.0	TAU273M35060□VA
	33000	35×80	0.50	7.1	TAU333M35080□VA
	39000	35×80	0.50	8.0	TAU393M35080□VA
	47000	35×100	0.50	9.2	TAU473M35100□VA
	56000	35×100	0.60	9.4	TAU563M35100□VA
	68000	35×120	0.60	11.0	TAU683M35120□VA
	82000	35×120	0.60	12.4	TAU823M35120□VA
	100000	51×95	0.60	12.9	TAU104M51095□VA
	120000	51×115	0.80	14.5	TAU124M51115□VA
	150000	51×130	0.80	16.9	TAU154M51130□VA
	180000	64×95	0.80	18.8	TAU184M64095□VA
	220000	64×115	1.00	19.3	TAU224M64115□VA
	270000	64×130	1.00	22.3	TAU274M64130□VA
330000	64×150	1.00	26.3	TAU334M64150□VA	
390000	76×115	1.20	26.5	TAU394M76115□VA	
470000	76×155	1.20	30.2	TAU474M76155□VA	
560000	89×130	1.20	32.9	TAU564M89130□VA	

WV <sub>DC</sub> (Surge Voltage) (V)	Cap (μF)	Size D×L (mm)	tanδ 20°C/120Hz	Ripple Current 85°C/120Hz (Arms)	Catalog Part Number
25 (32)	680000	89×157	1.20	38.3	TAU684M89157□VA
	10000	35×60	0.40	3.9	TAT103M35060□VA
	12000	35×60	0.40	4.2	TAT123M35060□VA
	15000	35×60	0.40	4.8	TAT153M35060□VA
	18000	35×80	0.40	5.4	TAT183M35080□VA
	22000	35×80	0.40	6.5	TAT223M35080□VA
	27000	35×100	0.40	7.2	TAT273M35100□VA
	33000	35×100	0.40	8.2	TAT333M35100□VA
	39000	35×120	0.50	9.5	TAT393M35120□VA
	47000	51×95	0.50	10.0	TAT473M51095□VA
	56000	51×95	0.60	9.8	TAT563M51095□VA
	68000	51×115	0.60	11.2	TAT683M51115□VA
	82000	64×95	0.60	13.3	TAT823M64095□VA
	100000	64×115	0.60	15.3	TAT104M64115□VA
	120000	64×115	0.80	17.0	TAT124M64115□VA
	150000	64×130	0.80	17.1	TAT154M64130□VA
180000	76×115	0.80	19.5	TAT184M76115□VA	
220000	76×130	0.80	23.0	TAT224M76130□VA	
270000	76×155	1.00	23.3	TAT274M76155□VA	
330000	89×130	1.00	27.0	TAT334M89130□VA	
390000	89×157	1.00	30.3	TAT394M89157□VA	
470000	89×157	1.00	33.9	TAT474M89157□VA	
35 (44)	5600	35×60	0.30	3.4	TAR562M35060□VA
	6800	35×60	0.30	3.7	TAR682M35060□VA
	8200	35×60	0.30	4.1	TAR822M35060□VA
	10000	35×60	0.30	4.6	TAR103M35060□VA
	12000	35×80	0.30	5.4	TAR123M35080□VA
	15000	35×80	0.30	6.3	TAR153M35080□VA
	18000	35×100	0.30	7.1	TAR183M35100□VA
	22000	35×120	0.40	7.2	TAR223M35120□VA
	27000	35×120	0.40	8.1	TAR273M35120□VA
	33000	51×95	0.40	9.4	TAR333M51095□VA
	39000	51×95	0.50	9.3	TAR393M51095□VA
	47000	51×115	0.50	10.7	TAR473M51115□VA
	56000	64×95	0.50	12.0	TAR563M64095□VA
	68000	64×95	0.50	13.8	TAR683M64095□VA
	82000	64×115	0.50	15.7	TAR823M64115□VA
	100000	76×115	0.60	16.9	TAR104M76115□VA
120000	76×115	0.60	19.2	TAR124M76115□VA	
150000	76×130	0.60	22.1	TAR154M76130□VA	
180000	76×155	0.60	25.1	TAR184M76155□VA	
220000	89×130	0.60	24.6	TAR224M89130□VA	
270000	89×157	0.60	28.6	TAR274M89157□VA	
50 (63)	3900	35×60	0.25	3.1	TAQ392M35060□VA
	4700	35×60	0.25	3.4	TAQ472M35060□VA
	5600	35×60	0.25	3.7	TAQ562M35060□VA
	6800	35×60	0.25	4.1	TAQ682M35060□VA
	8200	35×80	0.25	4.9	TAQ822M35080□VA
	10000	35×80	0.25	5.6	TAQ103M35080□VA
	12000	35×100	0.25	6.4	TAQ123M35100□VA
	15000	35×100	0.30	6.7	TAQ153M35100□VA
	18000	35×120	0.30	7.7	TAQ183M35120□VA
	22000	35×120	0.30	8.9	TAQ223M35120□VA
	27000	51×95	0.40	8.5	TAQ273M51095□VA
	33000	51×95	0.40	9.6	TAQ333M51095□VA
	39000	51×115	0.40	10.9	TAQ393M51115□VA
	47000	51×130	0.40	12.9	TAQ473M51130□VA
	56000	64×115	0.40	14.7	TAQ563M64115□VA

\*□Enter the appropriate terminal code



TA SERIES

◆ Standard Ratings

WV <sub>DC</sub> (Surge Voltage) (V)	Cap ( $\mu$ F)	Size D×L (mm)	tan $\delta$ 20°C/120Hz	Ripple Current 85°C/120Hz (Arms)	Catalog Part Number
63 (79)	68000	64x115	0.50	15.4	TAQ683M64115□VA
	82000	64x130	0.50	16.0	TAQ823M64130□VA
	100000	76x115	0.50	18.4	TAQ104M76115□VA
	120000	76x130	0.50	20.9	TAQ124M76130□VA
	150000	76x155	0.50	24.6	TAQ154M76155□VA
	180000	89x130	0.60	24.6	TAQ184M89130□VA
	220000	89x157	0.60	28.8	TAQ224M89157□VA
80 (100)	3300	35x60	0.25	2.8	TAP332M35060□VA
	3900	35x60	0.25	3.2	TAP392M35060□VA
	4700	35x60	0.25	3.4	TAP472M35060□VA
	5600	35x80	0.25	4.1	TAP562M35080□VA
	6800	35x80	0.25	4.4	TAP682M35080□VA
	8200	35x80	0.25	5.1	TAP822M35080□VA
	10000	35x100	0.25	5.9	TAP103M35100□VA
	12000	35x100	0.25	6.7	TAP123M35100□VA
	15000	35x120	0.25	7.8	TAP153M35120□VA
	18000	35x120	0.25	8.9	TAP183M35120□VA
	22000	51x95	0.30	9.2	TAP223M51095□VA
	27000	51x95	0.30	10.5	TAP273M51095□VA
	33000	51x115	0.30	12.0	TAP333M51115□VA
	39000	51x130	0.30	13.8	TAP393M51130□VA
	47000	64x115	0.30	16.6	TAP473M64115□VA
	56000	64x130	0.40	15.4	TAP563M64130□VA
68000	76x115	0.40	17.7	TAP683M76115□VA	
82000	76x130	0.40	19.9	TAP823M76130□VA	
100000	76x155	0.40	23.1	TAP104M76155□VA	
120000	89x130	0.40	24.6	TAP124M89130□VA	
150000	89x157	0.40	29.0	TAP154M89157□VA	
100 (125)	3300	35x60	0.25	2.9	TAO332M35060□VA
	3900	35x80	0.25	3.3	TAO392M35080□VA
	4700	35x80	0.25	3.8	TAO472M35080□VA
	5600	35x100	0.25	4.3	TAO562M35100□VA
	6800	35x100	0.25	5.0	TAO682M35100□VA
	8200	35x120	0.25	5.6	TAO822M35120□VA
	10000	35x120	0.25	6.5	TAO103M35120□VA
	12000	51x80	0.25	7.0	TAO123M51080□VA
	15000	51x95	0.25	7.7	TAO153M51095□VA
	18000	51x115	0.25	9.1	TAO183M51115□VA
	22000	51x130	0.25	11.0	TAO223M51130□VA
	27000	64x115	0.25	12.6	TAO273M64115□VA
	33000	64x130	0.25	13.1	TAO333M64130□VA
	39000	76x115	0.25	14.7	TAO393M76115□VA
	47000	76x130	0.35	15.7	TAO473M76130□VA
	56000	76x155	0.35	17.6	TAO563M76155□VA
68000	89x130	0.35	20.7	TAO683M89130□VA	
82000	89x157	0.35	22.6	TAO823M89157□VA	
100000	89x170	0.35	26.4	TAO104M89170□VA	
160 (200)	3900	51x80	0.20	5.8	TAN392M51080□VA
	4700	51x80	0.20	6.4	TAN472M51080□VA
	5600	51x95	0.20	7.7	TAN562M51095□VA
	6800	51x95	0.20	8.6	TAN682M51095□VA
	8200	51x115	0.20	10.0	TAN822M51115□VA
	10000	64x95	0.20	11.4	TAN103M64095□VA
	12000	64x95	0.20	12.4	TAN123M64095□VA
	15000	64x130	0.20	15.7	TAN153M64130□VA
	18000	64x130	0.20	17.2	TAN183M64130□VA
	22000	76x130	0.20	20.1	TAN223M76130□VA
27000	76x130	0.20	22.2	TAN273M76130□VA	

WV <sub>DC</sub> (Surge Voltage) (V)	Cap ( $\mu$ F)	Size D×L (mm)	tan $\delta$ 20°C/120Hz	Ripple Current 85°C/120Hz (Arms)	Catalog Part Number
160 (200)	33000	89x130	0.20	26.2	TAN333M89130□VA
	39000	89x157	0.20	30.7	TAN393M89157□VA
	47000	89x170	0.20	34.9	TAN473M89170□VA
	56000	89x195	0.20	38.1	TAN563M89195□VA
	68000	89x220	0.20	40.3	TAN683M89220□VA
	2200	35x100	0.20	3.9	TAL222M35100□VA
2700	35x120	0.20	4.7	TAL272M35120□VA	
3300	51x80	0.20	5.3	TAL332M51080□VA	
3900	51x80	0.20	5.7	TAL392M51080□VA	
4700	51x95	0.20	6.4	TAL472M51095□VA	
5600	51x115	0.20	7.6	TAL562M51115□VA	
6800	51x130	0.20	8.8	TAL682M51130□VA	
8200	64x95	0.20	9.4	TAL822M64095□VA	
10000	64x95	0.20	10.5	TAL103M64095□VA	
12000	76x95	0.20	12.1	TAL123M76095□VA	
15000	76x95	0.20	14.4	TAL153M76095□VA	
18000	76x130	0.20	16.5	TAL183M76130□VA	
22000	76x155	0.20	19.6	TAL223M76155□VA	
27000	89x130	0.20	21.5	TAL273M89130□VA	
33000	76x170	0.20	24.0	TAL333M76170□VA	
39000	89x160	0.20	25.5	TAL333M89160□VA	
36000	89x160	0.20	26.8	TAL363M89160□VA	
47000	89x195	0.20	35.1	TAL473M89195□VA	
56000	89x220	0.20	39.1	TAL563M89220□VA	
68000	100x220	0.20	47.5	TAL683M00220□VA	
200 (250)	1800	35x100	0.20	3.8	TAJ182M35100□VA
	2200	51x80	0.20	4.4	TAJ222M51080□VA
	2700	51x80	0.20	5.0	TAJ272M51080□VA
	3300	51x95	0.20	5.9	TAJ332M51095□VA
	3900	51x115	0.20	6.9	TAJ392M51115□VA
	4700	64x95	0.20	7.8	TAJ472M64095□VA
	5600	64x95	0.20	8.6	TAJ562M64095□VA
	6800	64x115	0.20	10.0	TAJ682M64115□VA
	8200	64x115	0.20	11.0	TAJ822M64115□VA
	10000	64x130	0.20	12.9	TAJ103M64130□VA
	12000	76x115	0.20	14.3	TAJ123M76115□VA
	15000	76x130	0.20	16.6	TAJ153M76130□VA
	18000	76x155	0.20	19.5	TAJ183M76155□VA
	22000	89x160	0.20	23.2	TAJ223M89160□VA
	33000	89x170	0.20	29.4	TAJ333M89170□VA
	47000	89x235	0.20	39.6	TAJ473M89235□VA
56000	100x235	0.20	44.6	TAJ563M00235□VA	
250 (300)	1500	51x95	0.15	5.4	TAH152M51095□VA
	1800	51x95	0.15	6.0	TAH182M51095□VA
	2200	51x115	0.15	7.2	TAH222M51115□VA
	2700	51x130	0.15	8.4	TAH272M51130□VA
	3300	51x130	0.15	8.8	TAH332M51130□VA
	3900	64x115	0.15	10.9	TAH392M64115□VA
	4700	64x130	0.15	12.6	TAH472M64130□VA
	5600	76x115	0.15	13.7	TAH562M76115□VA
	6800	76x130	0.15	15.9	TAH682M76130□VA
	8200	76x155	0.15	18.9	TAH822M76155□VA
	10000	89x157	0.15	21.5	TAH103M89157□VA
	12000	89x157	0.15	23.6	TAH123M89157□VA
	15000	89x195	0.15	26.7	TAH153M89195□VA
	18000	89x235	0.15	33.4	TAH183M89235□VA
	18000	100x155	0.15	31.6	TAH183M00235□VA
	22000	100x220	0.15	34.5	TAH223M00220□VA
39000	100x237	0.15	47.6	TAH393M00237□VA	

\*□Enter the appropriate terminal code



TA SERIES

◆ Standard Ratings

WV <sub>DC</sub> (Surge Voltage) (V)	Cap (μF)	Size D×L (mm)	tanδ 20°C/120Hz	Ripple Current 85°C/120Hz (Arms)	Catalog Part Number
400 (450)	820	35×100	0.15	3.5	TAG821M35100□VA
	1000	51×80	0.15	4.5	TAG102M51080□VA
	1200	51×80	0.15	4.9	TAG122M51080□VA
	1500	51×95	0.15	6.0	TAG152M51095□VA
	1800	51×95	0.15	6.5	TAG182M51095□VA
	2200	51×115	0.15	7.5	TAG222M51115□VA
	2200	64×80	0.15	7.3	TAG222M64080□VA
	2200	64×95	0.15	7.9	TAG222M64095□VA
	2700	64×95	0.15	9.8	TAG272M64095□VA
	2700	76×95	0.15	10.8	TAG272M76095□VA
	3300	64×105	0.15	10.1	TAG332M64105□VA
	3300	64×110	0.15	10.3	TAG332M64110□VA
	3300	64×115	0.15	10.5	TAG332M64115□VA
	3300	76×95	0.15	10.7	TAG332M76095□VA
	3900	64×130	0.15	12.0	TAG392M64130□VA
	3900	76×95	0.15	11.5	TAG392M76095□VA
	4700	76×115	0.15	13.8	TAG472M76115□VA
	5600	76×130	0.15	15.8	TAG562M76130□VA
	6800	76×145	0.15	17.2	TAG682M76145□VA
	6800	76×150	0.15	17.5	TAG682M76150□VA
6800	76×155	0.15	17.8	TAG682M76155□VA	
6800	89×130	0.15	18.1	TAG682M89130□VA	
8200	89×145	0.15	19.3	TAG822M89145□VA	
8200	89×157	0.15	20.0	TAG822M89157□VA	
10000	89×157	0.15	22.0	TAG103M89157□VA	
12000	89×195	0.15	25.0	TAG123M89195□VA	
15000	89×220	0.15	28.7	TAG153M89220□VA	
15000	89×235	0.15	29.5	TAG153M89235□VA	
18000	89×235	0.15	32.3	TAG183M89235□VA	
22000	100×237	0.15	34.9	TAG223M00237□VA	
450 (500)	820	51×80	0.15	4.1	TAE821M51080□VA
	1000	51×80	0.15	4.5	TAE102M51080□VA
	1200	51×95	0.15	5.3	TAE122M51095□VA
	1500	51×115	0.15	6.5	TAE152M51115□VA
	1800	51×130	0.15	7.3	TAE182M51130□VA
	2200	64×95	0.15	8.2	TAE222M64095□VA
	2700	64×115	0.15	9.9	TAE272M64115□VA
	3300	64×130	0.15	11.5	TAE332M64130□VA
	3900	76×115	0.15	13.1	TAE392M76115□VA
	4700	76×130	0.15	14.8	TAE472M76130□VA
	5600	76×155	0.15	17.4	TAE562M76155□VA
	6800	89×157	0.15	19.6	TAE682M89157□VA
	8200	89×157	0.15	21.6	TAE822M89157□VA
	10000	89×195	0.15	24.5	TAE103M89195□VA
	12000	89×235	0.15	27.3	TAE123M89235□VA
	15000	89×235	0.15	30.5	TAE153M89235□VA
18000	100×220	0.15	33.4	TAE183M00220□VA	
22000	100×260	0.15	38.7	TAE223M00260□VA	
500 (550)	1000	51×115	0.20	5.3	TAC102M51115□VA
	1200	51×115	0.20	5.8	TAC122M51115□VA
	1500	51×130	0.20	6.8	TAC152M51130□VA
	1800	64×115	0.20	8.1	TAC182M64115□VA
	2200	64×130	0.20	9.4	TAC222M64130□VA
	2700	76×115	0.20	10.9	TAC272M76115□VA
	3300	76×130	0.20	12.4	TAC332M76130□VA

WV <sub>DC</sub> (Surge Voltage) (V)	Cap (μF)	Size D×L (mm)	tanδ 20°C/120Hz	Ripple Current 85°C/120Hz (Arms)	Catalog Part Number
500 (550)	3900	76×130	0.20	13.4	TAC392M76130□VA
	4700	76×155	0.20	15.9	TAC472M76155□VA
	5600	89×157	0.20	17.7	TAC562M89157□VA
	6800	89×170	0.20	20.3	TAC682M89170□VA
	8200	76×220	0.20	21.7	TAC822M76220□VA
	10000	89×235	0.20	26.9	TAC103M89235□VA
550 (600)	1000	51×130	0.20	5.2	TAZ102M51130□VA
	1200	51×130	0.20	5.7	TAZ122M51130□VA
	1500	64×115	0.20	6.9	TAZ152M64115□VA
	1800	76×95	0.20	7.6	TAZ182M76095□VA
	2200	76×115	0.20	8.5	TAZ222M76115□VA
	2700	76×130	0.20	10.0	TAZ272M76130□VA
	3300	89×130	0.20	11.7	TAZ332M89130□VA
	4700	89×157	0.20	15.0	TAZ472M89157□VA
	5600	89×170	0.20	17.1	TAZ562M89170□VA
	6800	89×195	0.20	19.5	TAZ682M89195□VA
8200	89×220	0.20	23.6	TAZ822M89220□VA	
10000	89×250	0.20	25.3	TAZ103M89250□VA	
600 (650)	1000	64×80	0.20	6.2	TAB102M64080□VA
	1200	64×95	0.20	6.7	TAB122M64095□VA
	1500	64×115	0.20	8.0	TAB152M64115□VA
	1800	76×95	0.20	9.6	TAB182M76095□VA
	2200	76×115	0.20	11.5	TAB222M76115□VA
	2700	76×130	0.20	12.1	TAB272M76130□VA
	3300	76×155	0.20	15.3	TAB332M76155□VA
	3900	76×195	0.20	18.4	TAB392M76195□VA
4700	89×157	0.20	19.2	TAB472M89157□VA	
5600	89×195	0.20	22.0	TAB562M89195□VA	
6800	89×220	0.20	24.0	TAB682M89220□VA	
650 (700)	1000	64×115	0.20	6.0	TAA102M64115□VA
	1200	64×130	0.20	6.9	TAA122M64130□VA
	1500	76×115	0.20	8.1	TAA152M76115□VA
	1800	76×130	0.20	9.5	TAA182M76130□VA
	2200	76×155	0.20	10.6	TAA222M76155□VA
	2700	89×130	0.20	12.5	TAA272M89130□VA
	3300	89×157	0.20	14.5	TAA332M89157□VA
	3900	89×170	0.20	16.0	TAA392M89170□VA
4700	89×195	0.20	18.6	TAA472M89195□VA	
5600	89×220	0.20	21.4	TAA562M89220□VA	
700 (750)	1000	64×130	0.20	5.2	TA5102M64130□VA
	1200	76×115	0.20	5.9	TA5122M76115□VA
	1500	76×130	0.20	6.9	TA5152M76130□VA
	1800	76×155	0.20	8.2	TA5182M76155□VA
	2200	89×157	0.20	9.9	TA5222M89157□VA
	2700	89×170	0.20	11.5	TA5272M89170□VA
	3300	89×195	0.20	13.1	TA5332M89195□VA
3900	89×220	0.20	15.0	TA5392M89220□VA	
750 (800)	820	64×115	0.20	4.5	TA6821M64115□VA
	1000	64×130	0.20	5.3	TA6102M64130□VA
	1200	76×115	0.20	6.0	TA6122M76115□VA
	1500	76×145	0.20	7.1	TA6152M76145□VA
	1800	76×170	0.20	8.4	TA6182M76170□VA
	2200	76×195	0.20	10.2	TA6222M76195□VA
	2700	89×170	0.20	11.8	TA6272M89170□VA
	3300	89×195	0.20	13.4	TA6332M89195□VA

\*□Enter the appropriate terminal code

\*Please ask for advice for other sizes.

\*Aluminum electrolytic capacitor will emit heat when ripple current is applied, the performance will deteriorate when temp. rises. the useful life will be half of original life when temp rises every 5°C. Please reduce the ripple current when using capacitor.